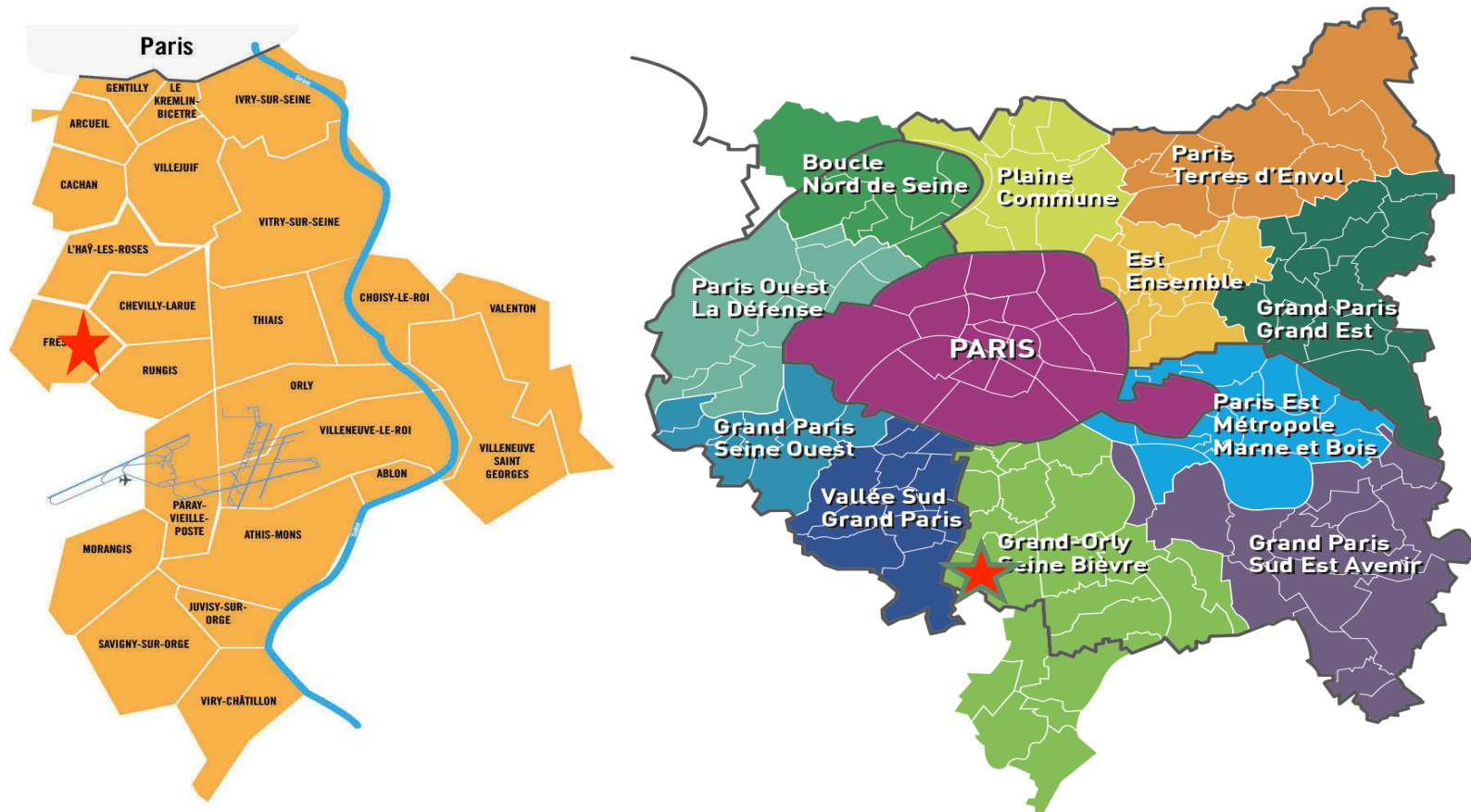


Windows on gardens

Ecomuseum of Val-de-Bièvre, France.



The ecomuseum of Val-de-Bievre: a museum located in Paris suburb



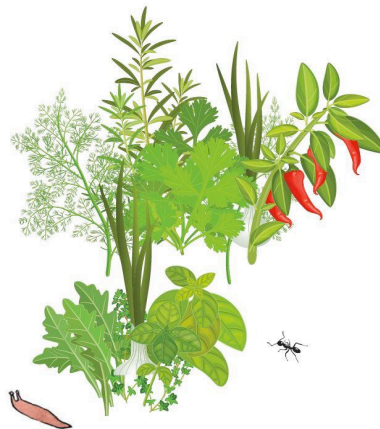
ICH and museums 26.09.18

- The main goals of this museum: put the suburb heritage in the light and to pass on its history
- Methodology based on the realisation of oral inquiries with the residents
- The inhabitant's participation is at the heart of the museum's project.



THE *WINDOWS ON GARDENS* :
A PROJECT WHICH HIGHLIGHTS THE INTANGIBLE
CULTURAL HERITAGE OF THE SUBURB

ICH and museums 26.09.18



- On April 2019, the annual exhibition *Windows on gardens* will be inaugurated;
- This is an ongoing project
- A methodology based on the inhabitants' participation
- Supported by an ethnobotanist searcher

- Allotment gardens: individual practice in a collective and historical structure / a nourishing garden / social cohesion
- Shared gardens: collective practice / invest the public space / eat better / welfare / back to the roots / common project
- Private gardens: individual practice in a private space / a space which allows conviviality / transmission of practices within a family / welfare

THE PRACTITIONERS OF THE PROJECT

- Inhabitants: 25 people spread on 9 different cities in the suburb area
- The preservation team: 3 interviewers
- A scientific committee

ENTHUSIASTIC AND INVOLVED INHABITANTS



The garden is a simple pleasure, it is often in the simple pleasures that we find happiness!

It represents this peaceful moment, of tranquility, of friendliness, of sharing: yes, of sharing, of welfare!



In the morning, I haven't had breakfast, I'm going to go around my garden, look at the buds, and see a rose that's going to bloom.



Working the land, knowing what it will bring us! You plant, it grows, it grows, and after having it on the plate it's totally different!



I discovered that you can live indoors and outdoors in the same day, and that's really great!

ICH and mus

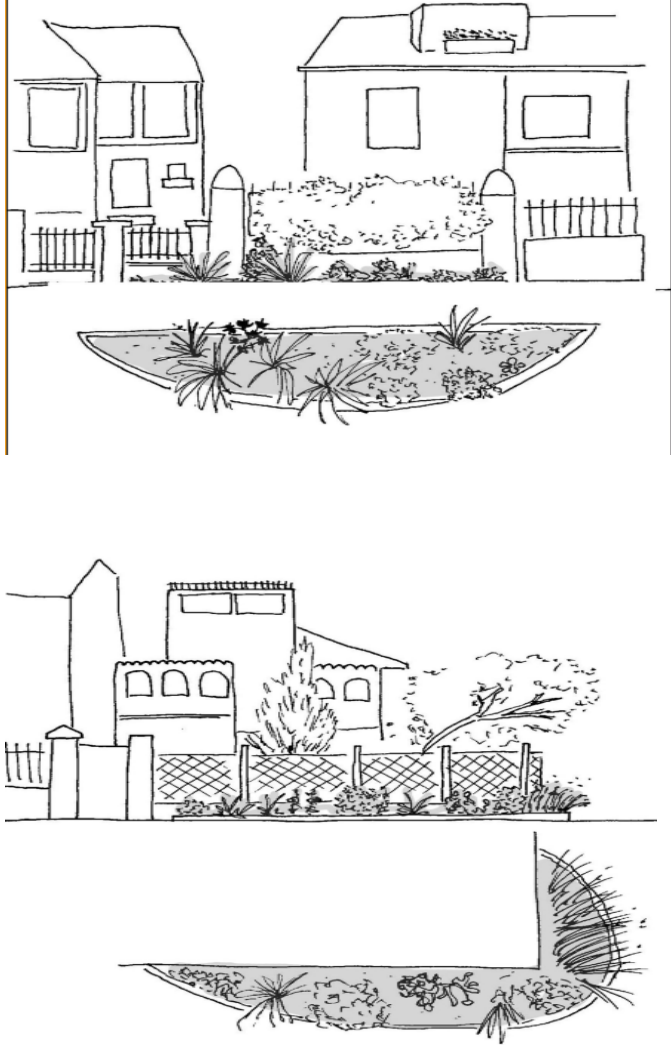
I like to feel the earth, to see things grow, I need it!



THE INVOLVEMENT OF THE INHABITANTS

- The time they dedicated to the project and their availabilities
- Their desire to share and to pass on their knowledge
- Loan of an object which symbolizes their own garden
- Donation of a plant they picked to constitute a common herbarium

- Desk review
- Semi-structured interviews and in-situ observations
- Records archiving
- Photographic portraits
- Graphic depictions (sketches and maps)

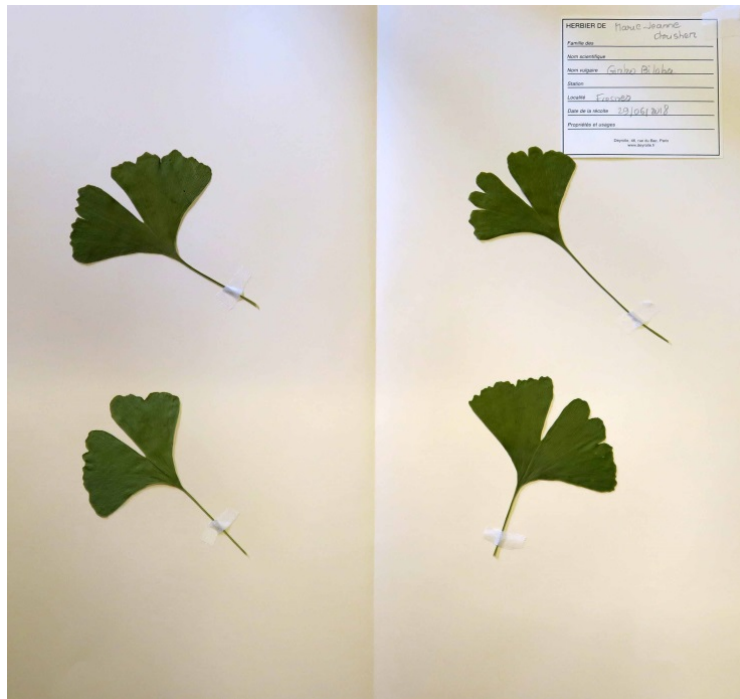


MEDIATION ACTIONS

- Urban walks
- Garden workshops
- Herbarium workshops
- Conferences
- Design of an experimental and collaborative garden in the courtyard of the museum

AN INNOVATIVE APPROACH ?

- The practices and the knowledge of the inhabitants used to build a scientific statement
- Herbarium representative of an urbanised society



PRACTICES AND ATTACHMENT TO NATURE IN RELATION TO URBAN LIFE

- A suburb territory in mutation
- Awareness and evolution of practices: notion of urban ecology
- The need to reconnect with nature
- The need to create sharing and welcoming spaces
- The need to eat better and cheaper

PRELIMINARY RESULTS

- First analyses and main lines of action identified :
- A great solidarity and a real sharing of practices that reveals a community of suburban gardeners
- An evolution of practices and consciousness oriented towards a reasoned practice of gardening
- Very sensitive testimonies: sensations, emotions, pleasures linked to the garden lived as a space of freedom and escape.

